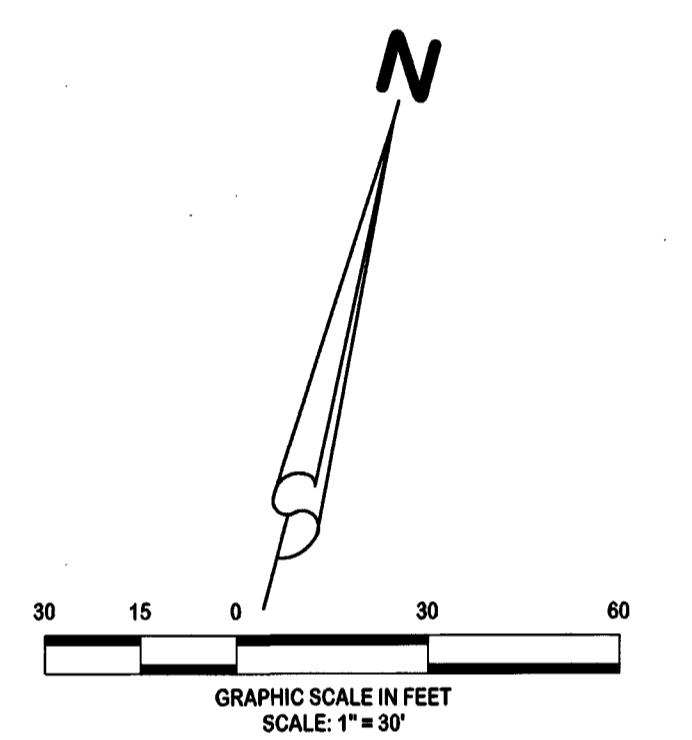
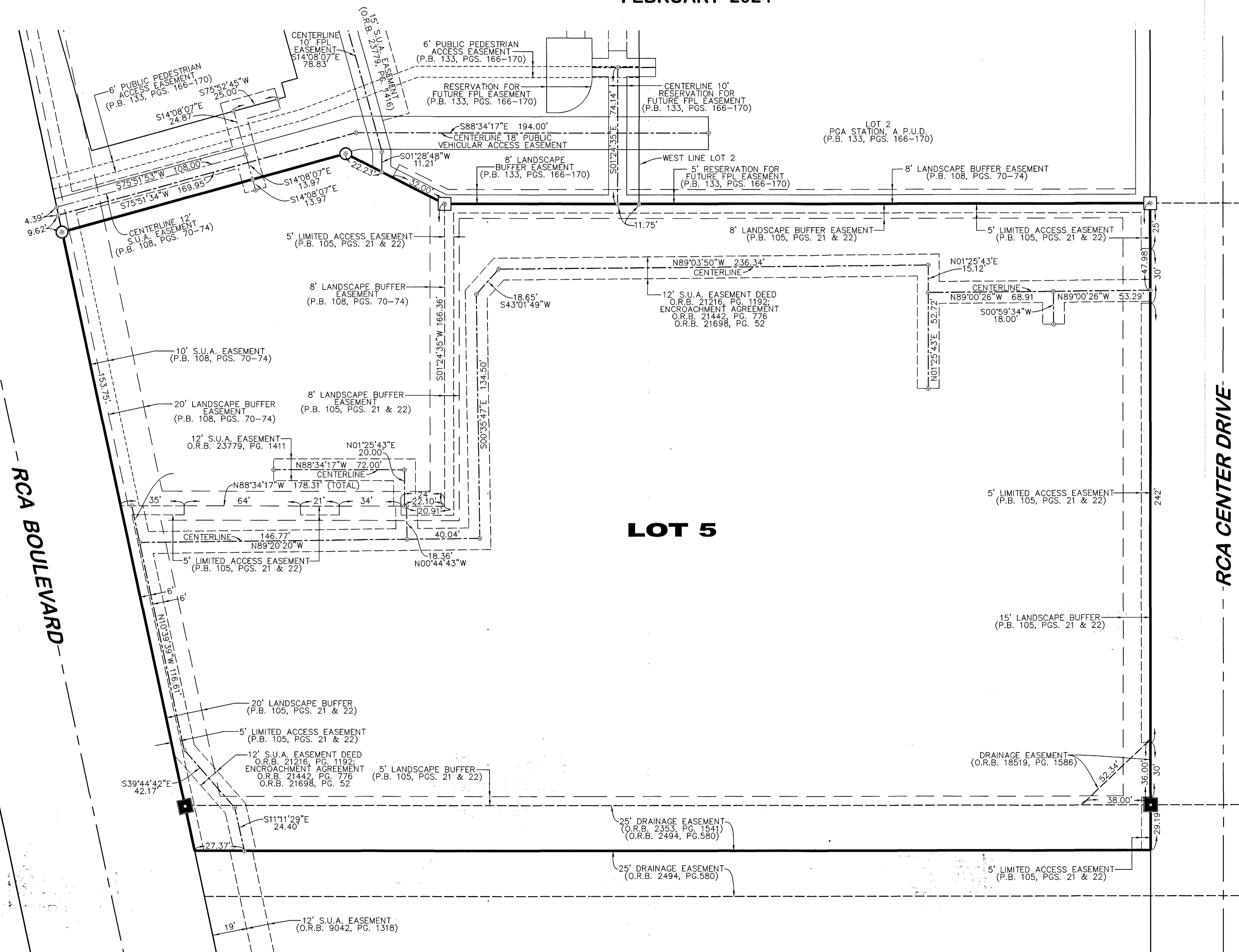


PGA STATION, A P.U.D. - LOT 5

BEING A REPLAT OF PARCEL "B-1", AS SHOWN ON MACARTHUR PARCEL 5B REPLAT, A METES AND BOUNDS SUBDIVISION, RECORDED IN OFFICIAL RECORD BOOK 24218, PAGE 850 AND A REPLAT OF THE WEST TRACT, AS SHOWN ON THE PLAT OF GARDENS STATION, RECORDED IN PLAT BOOK 105, PAGES 21 AND 22 PUBLIC RECORDS OF PALM BEACH COUNTY, FLORIDA LYING IN SECTION 1, TOWNSHIP 42 SOUTH, RANGE 42 EAST, AND SECTION 6, TOWNSHIP 42 SOUTH, RANGE 43 EAST CITY OF PALM BEACH GARDENS, PALM BEACH COUNTY, FLORIDA

FEBRUARY 2024

SHEET 5 OF 5



**EASEMENTS
DETAIL SHEET**

THIS INSTRUMENT WAS PREPARED BY KENNETH J. BUCHANAN P.S.M., IN AND FOR THE OFFICES OF LIDBERG LAND SURVEYING, INC., 675 WEST INDIANTOWN ROAD, SUITE 200, JUPITER, FLORIDA 33458. TELEPHONE (561) 746-8454.

LIDBERG LAND SURVEYING, INC.
 675 West Indiantown Road, Suite 200, Jupiter, Florida 33458 TEL. 561-746-8454

CAD: K:\UST \ 064243 \ 133-166 \ 23-099-306 \ 23-099-306.DGN			
REF:			
FLD:	FB:	PG:	JOB: 23-099-306
OFF: CASASUS			DATE: MARCH 2024
CKD: K.J.B.	SHEET: 5	OF: 5	DWG: D23-099P